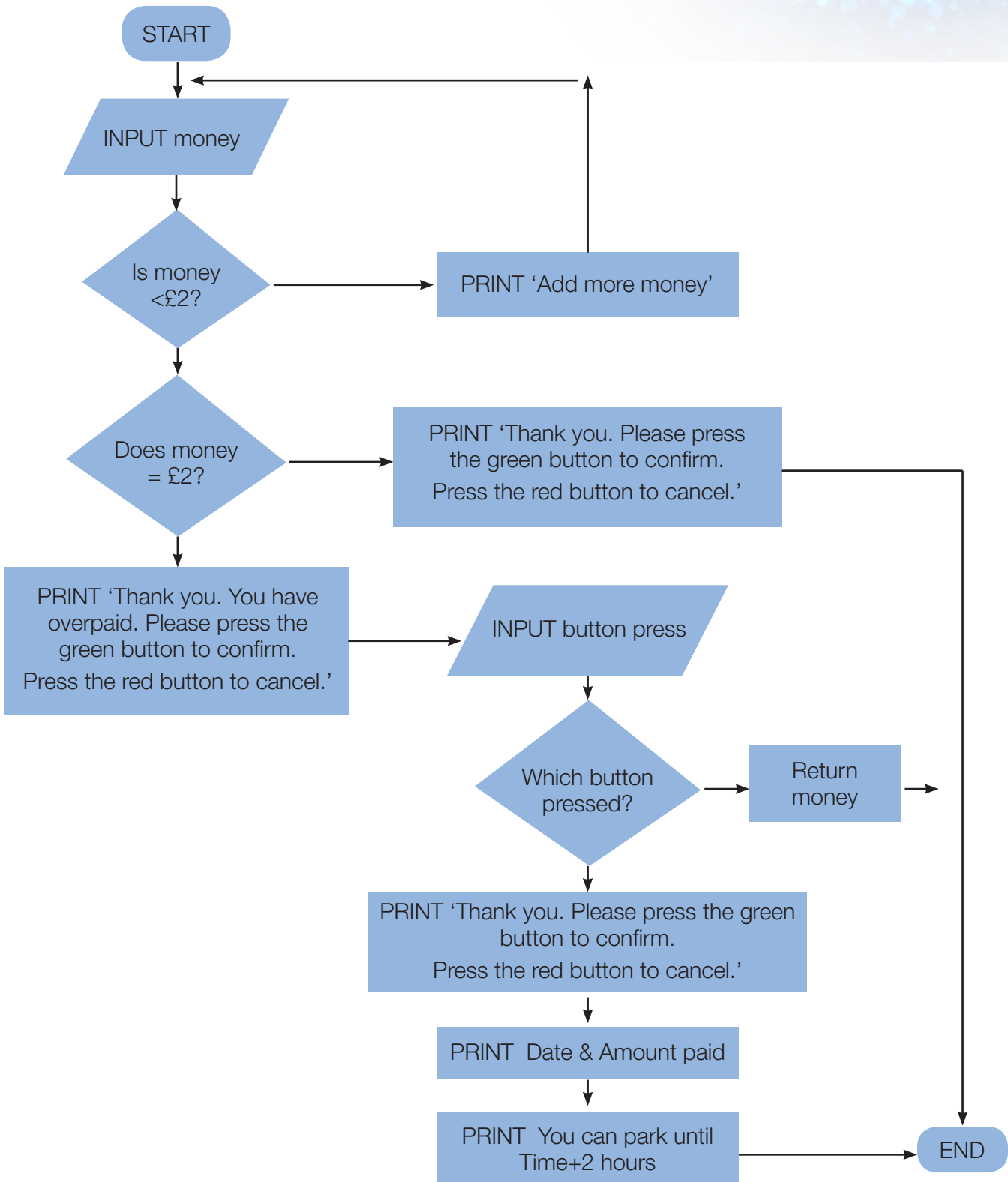


# Algorithms in pseudocode and flow diagrams

## Worksheet 2

Nav writes a program for printing pay and display car park tickets for a fixed two-hour stay.



# Algorithms in pseudocode and flow diagrams

## Worksheet 2



(a) A user enters £3. Explain what will happen.

---

---

(b) State *two* decisions which have to be made in this process.

---

---

(c) A user is issued this ticket from the system:

19/07/2013    £3.00  
You can park until 14.21h

State *three* facts you can work out from this ticket.

1. \_\_\_\_\_
2. \_\_\_\_\_
3. \_\_\_\_\_